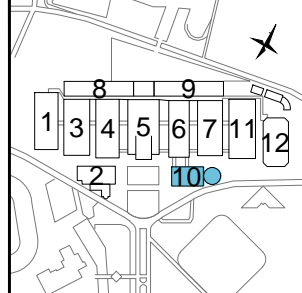
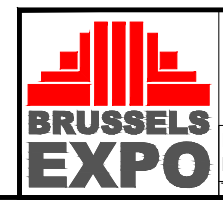
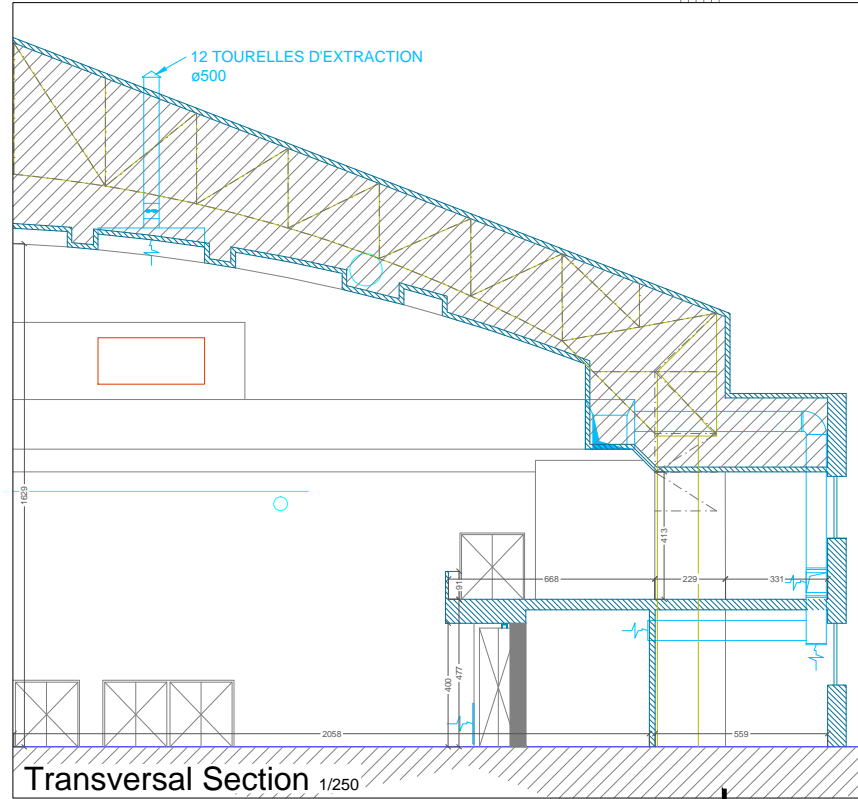


Plan good for internal purposes only.
 This document remains the property of BRUSSELS EXPO. It may not be reproduced nor may it be forwarded to third parties.
 I:\02_DWG\PlansCommercial_2016\06-2016



- LEGENDE**
- Gutters
Caniveaux
Technische goten
 - Zone limited load
Zone de charges limitées
Zone met beperkte lasten
 - Free Zone
Zone Libre
Vrije Zone
 - Not for rent
Non compris dans location
Niet in huurprijs inbegrepen
 - Zones occupied by BE
Zones occupées par BE
Zone gebruikt door BE
 - Lavatory
Sanitaire
Sanitair
 - Acces lorry
Accès poids-lourds
Toegang Vrachtwagens
 - Acces pedestrians
Accès piétons
Toegang voetgangers
 - Numbering gates
2014_ Nummèrotoation portes
Nummering poorten

- Free zone of minimum 1.20m to respect
 Zone libre de minimum 1.20m à respecter
 Vrije zone van minimum 1.20m te respecteren
- Control cabinet
Armoire électrique
Elektrische kast
 - Hose reel
Dévidoir
Brandhaspel
- visibility & direct accessibility from alleyway to be maintained
 visibilité & accessibilité à garantir depuis les allées piétonnes
 zichtbaarheid & toegankelijkheid te garanderen vanaf gangpaden



Hall 10 Commercial Plan
 Overview