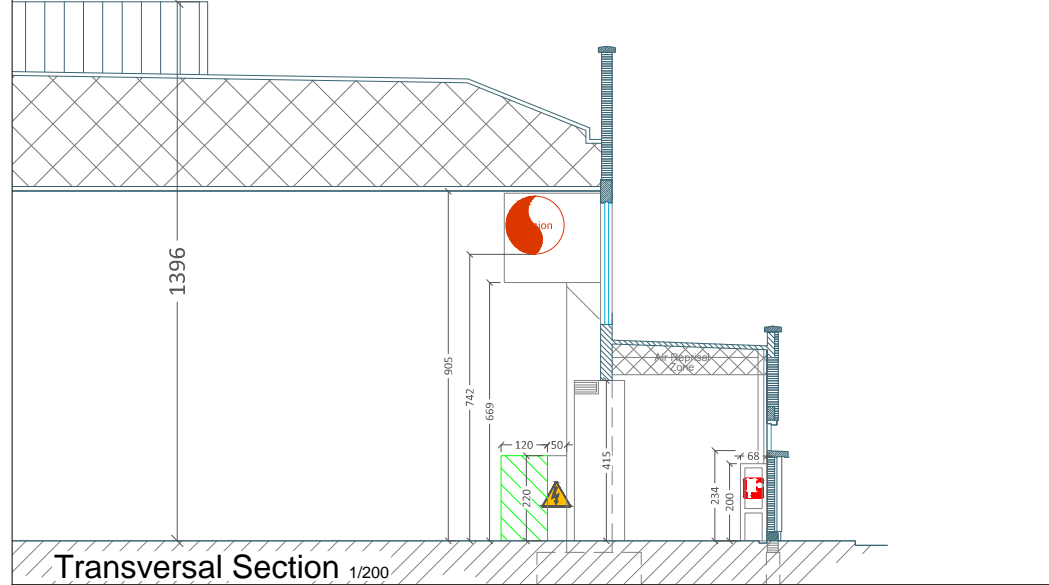
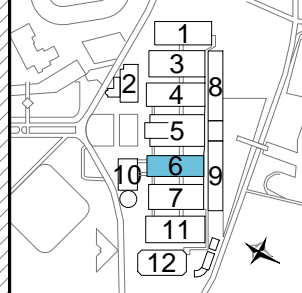
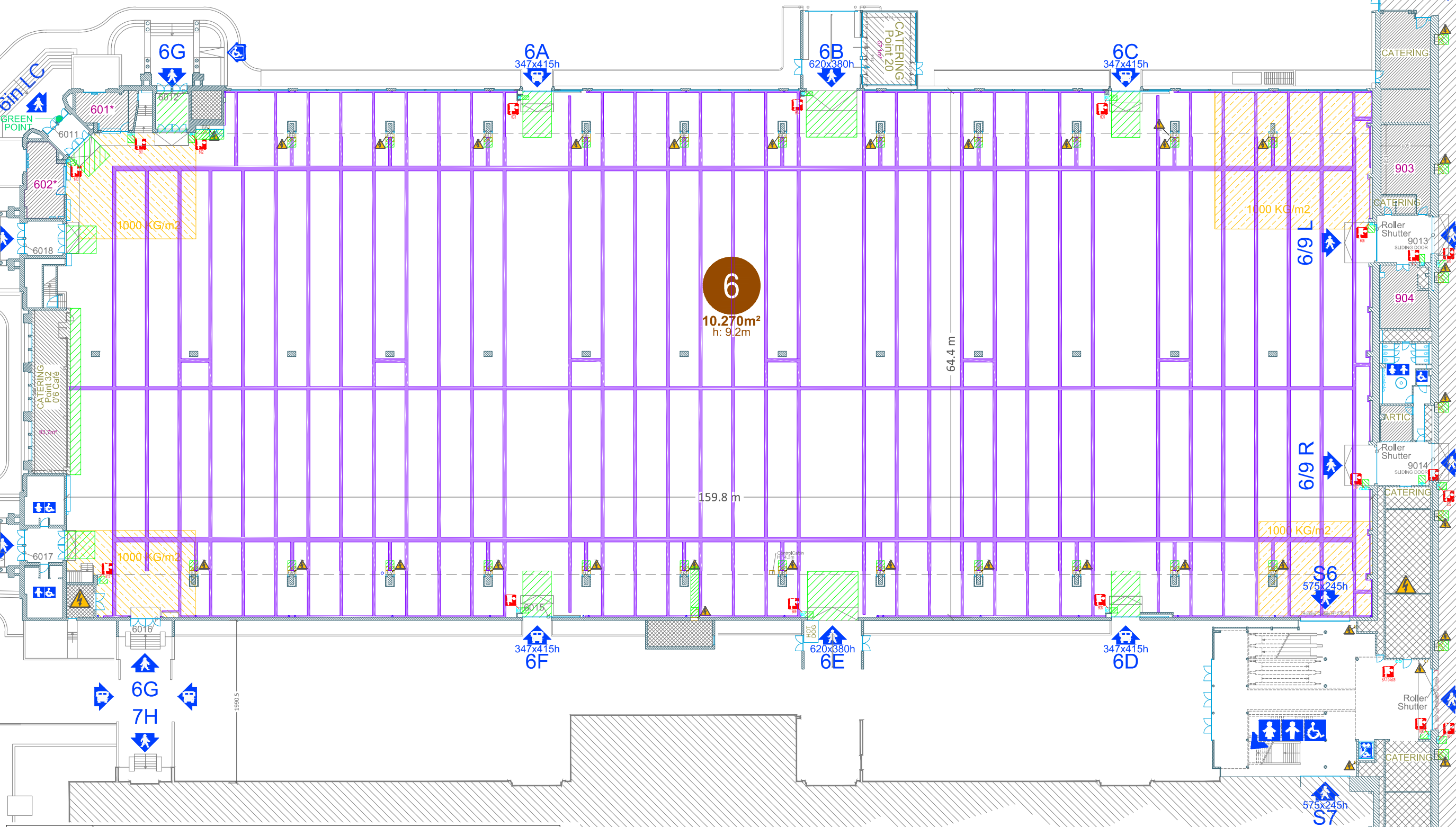


Plan good for internal purposes only.
 This document remains the property of BRUSSELS EXPO. It may not be reproduced nor may it be forwarded to third parties.
 I:\02_DWG\PlansCommercial\Commercial_2016\06-2016



LEGENDE

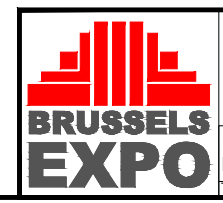
- Gutters / Caniveaux / Technische goten
- Zone limited load / Zone de charges limitées / Zone met beperkte lasten
- Free Zone / Zone Libre / Vrije Zone
- Not for rent / Non compris dans location / Niet in huurprijs inbegrepen
- Zones occupied by BE / Zones occupées par BE / Zone gebruikt door BE
- Lavatory / Sanitaire / Sanitair
- Acces lorry / Accès poids-lourds / Toegang Vrachtwagens
- Acces pedestrians / Accès piétons / Toegang voetgangers
- Numbering gates / Numméroation portes / Nummering poorten
- Control cabinet / Armoire électrique / Elektrische kast
- Hose reel / Dévidoir / Brandhaspel

2014

Free zone of minimum 1.20m to respect
 Zone libre de minimum 1.20m à respecter
 Vrije zone van minimum 1.20m te respecteren

visibility & direct accessibility from alleyway to be maintained
 visibilité & accessibilité à garantir depuis les allées publiques
 zichtbaarheid & toegankelijkheid te garanderen vanaf gangpaden

HALL 07



Hall 06 Commercial Plan
 Overview

Place de Belgique n° 1 | Belgiëplein n° 1 | www.brussels-expo.be | Papersize: A3
 B-1020 Bruxelles | B-1020 Brussel | info@brussels-expo.be | Scale: 1/500
 This document remains the property of BRUSSELS EXPO. It may not be reproduced nor may it be forwarded to third parties. | Date: 11/10/16