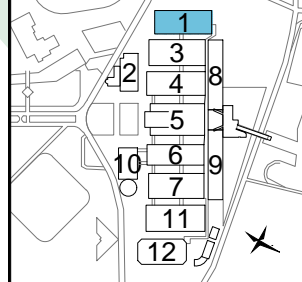
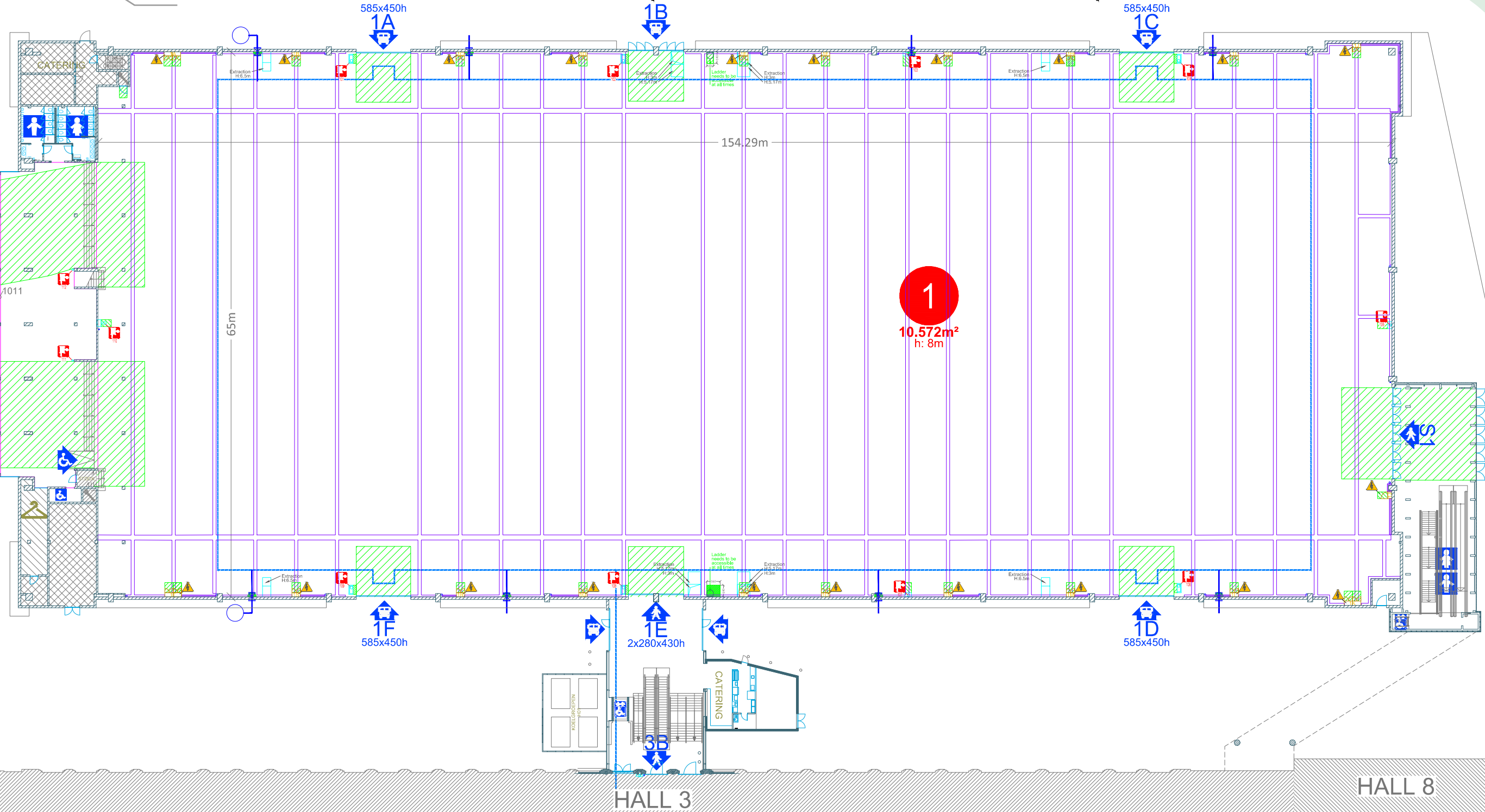
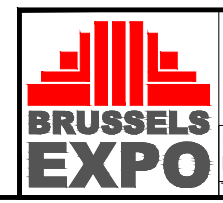
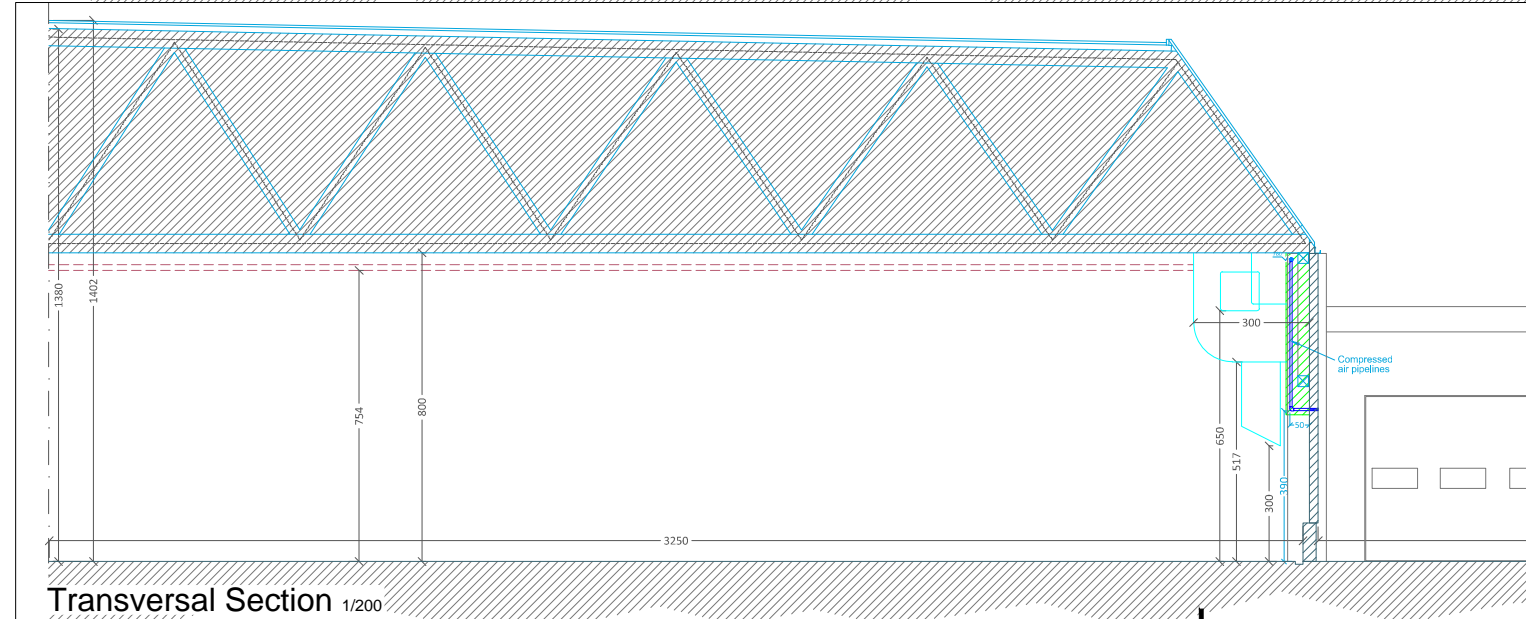


Plan good for commercial purposes. All dimensions are given for indicative purposes only. Measurements should be checked on site prior to commencement. This document remains the property of BRUSSELS EXPO. It may not be reproduced nor may it be forwarded to third parties. I:\02\_DWG\PlansCommercial\Commercial\_2017\171026\



- LEGENDE**
- Gutters
  - Caniveaux
  - Technische goten
  - Zone limited load
  - Zone de charges limitées
  - Zone met beperkte lasten
  - Free Zone
  - Zone Libre
  - Vrije Zone
  - Not for rent
  - Non compris dans location
  - Niet in huurprijs inbegrepen
  - Zones occupied by BE
  - Zones occupées par BE
  - Zone gebruikt door BE
  - Lavatory
  - Sanitaire
  - Sanitair
  - Acces lorry
  - Accès poid-lourds
  - Toegang Vrachtwagens
  - Acces pedestrians
  - Accès piétons
  - Toegang voetgangers
  - Numbering gates
  - Numméroation portes
  - Nummering poorten
- 2014

- Free zone of minimum 1.20m to respect  
 Zone libre de minimum 1.20m à respecter  
 Vrije zone van minimum 1.20m te respecteren
- Control cabinet
  - Armoire électrique
  - Elektrische kast
  - Hose reel
  - Dévidoir
  - Brandhaspel
- Visibility & direct accessibility from alleyway to be maintained  
 Visibilité & accessibilité à garantir depuis les allées publiques  
 Zichtbaarheid & toegankelijkheid te garanderen vanaf gangpaden



**Hall 01 Commercial Overview**

Place de Belgique n° 1  
 B-1020 Bruxelles

Belgiëplein n° 1  
 B-1020 Brussel

www.brussels-expo.be  
 info@brussels-expo.be

Papersize: A3  
 Scale: 1/500  
 Date: 27/10/17

This document remains the property of BRUSSELS EXPO. It may not be reproduced nor may it be forwarded to third parties.